

SHAPING A SUSTAINABLE FUTURE



TABLE OF CONTENTS

1	Letter from the director
2	Introduction
3	Global Impact Map
4	Water Management
5	Landscape Management
6	Harvesting Health
8	Improving Water Efficiency and Biodiversity Conservation
10	Going Bananas
12	Supporting Community Implementation of Catchment Management Measures
14	Deforestation-free Supply Chains
15	Trade and Deforestation Risk Profiles of EU Member States
17	EMMA4EU - Innovation Alliance for Training Programmes for Deforestation-Free Supply Chains in Europe
19	Realtime Deforestation Monitoring Programme – Soy and Cattle in Brazil
21	Looking Ahead
22	Collaborate with Us
23	Contact Us

REFLECTIONS FROM THE GENERAL DIRECTOR

2024 was my remarkable first year at AidEnvironment. It was a journey of deep learning, meaningful collaboration, and shared commitment to sustainability. What made this year particularly special were the incredible colleagues I had the privilege of working with. Their unwavering dedication to the mission of AidEnvironment—to foster sustainable practices and transformative change—was and still is truly inspiring.

This year unfolded against a backdrop of significant geopolitical shifts. Elections in various parts of the world brought about a tide of right-wing, conservative, and populist governance, which often deprioritised international solidarity and sustainable collaborations. Yet, rather than being discouraged, these challenges invigorated us to act with greater focus on bottom-up approaches. In both local and international settings, it is at the grassroots where the most inspiring and impactful actions take shape.

At AidEnvironment, 2024 was a year of witnessing transformation firsthand. In the Philippines, farmers turned barren farmland into thriving regenerative agricultural systems, securing livelihoods for years to come. In Uganda, coffee farmers demonstrated the power of sustainable water management, and the impact of composting, biodigesters, and multiple cropping. Through these practices, they not only increased their incomes but also embraced coffee as a climate-resilient and rewarding crop.

Our work in and around the Amazon centered on joining forces with our community of partners to conduct action research. Together, we developed detailed case studies to spotlight both sustainable and unsustainable agricultural practices within this vital rainforest ecosystem. These insights will guide all of us in advocating for compliance with international standards and ways of working that nurture rather than deplete the Earth.

AidEnvironment is more than an organisation—it is a collective of dedicated individuals, loyal partnerships, and a shared belief in the potential of thoughtful, high-quality work to drive meaningful impact. It is about people as much as it is about important interventions. Most importantly, AidEnvironment is rooted in the resilience and innovation of those who are most impacted on the ground.

As I look ahead to 2025, I am filled with hope and determination. Together, we will continue to advance our mission, building on the foundations laid this year. The challenges ahead are significant, but so too is the resolve of our team and partners. Here's to moving forward together.



ANNA SCHOEMAKERS
GENERAL DIRECTOR

INTRODUCTION

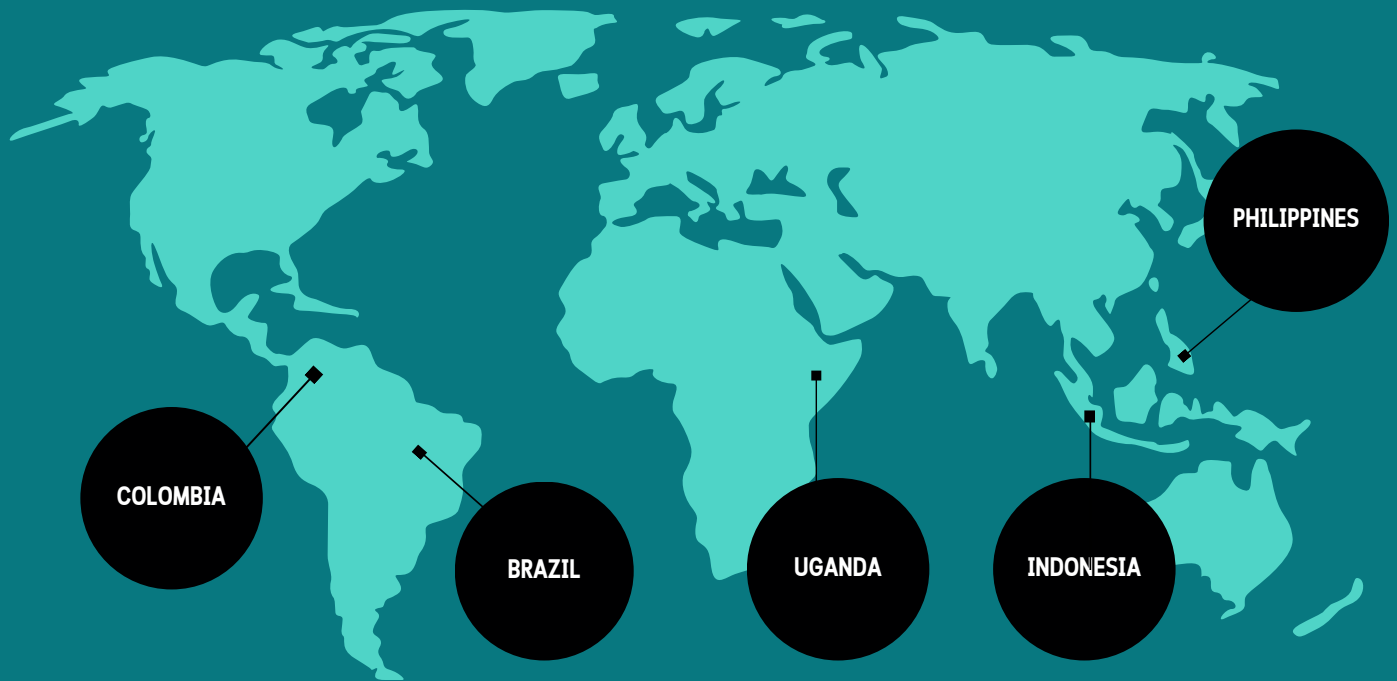
Dear reader,

Welcome to AidEnvironment's Annual Report for 2024. This report provides a detailed overview of our activities, highlighting the progress and challenges of the past year. As a not-for-profit organisation specialising in sustainability research, strategy, and advisory services, AidEnvironment leverages data, innovative technology, and systemic thinking to drive meaningful change.

We work across multiple continents from our offices in Amsterdam and Uganda, supported by our team of experts, and a dedicated partnership with Sangga Bumi Lestari in Indonesia to support initiatives in Southeast Asia.

Our team collaborates with NGOs, governments, financial institutions, and businesses to develop and implement solutions aimed at protecting ecosystems and enhancing livelihoods. With expertise ranging from combating deforestation to advancing regenerative agriculture, we remain committed to fostering sustainability through local partnerships. We invite you to explore our efforts and impact in this report and gain deeper insights into AidEnvironment's mission.





GLOBAL IMPACT VIA DATA ANALYSIS AND COMMUNITY-DRIVEN INTERVENTIONS

Our work on key issue areas spans the globe. We do research and analysis on deforestation in the Brazilian Amazon and Cerrado. We improve land and water management in the Mt. Elgon region of Uganda, as well as on the hillsides of South Cotabato in the Philippines. Additionally, we work with coffee farmers in Colombia. Apart from our direct projects on the ground, we collaborate with others working on similar issues by providing support or sharing knowledge.

WATER MANAGEMENT

In 2024, we continued to make significant strides in improving access to clean water, enhancing livelihoods, and fostering sustainable environmental practices across multiple regions. In the Western Sahel, our team actively explored opportunities for rainwater harvesting and storage, working closely with partners to implement solutions that provide long-term access to safe drinking water. Meanwhile, in Eastern Uganda, we built on our efforts on behalf of the Ministry of Water and Environment, empowering local communities through beekeeping. By providing training, production technology, and market access, we supported individuals to turn beekeeping into a sustainable source of income. Additionally, our work on the Welang Project remained a key focus, as we collaborated with Sangga Bumi Lestari to ensure that interventions along the Welang River were effectively implemented, directly benefiting local communities. Each of these initiatives underscored our commitment to creating lasting, positive change in water security, livelihoods, and environmental resilience.



LANDSCAPE MANAGEMENT

Aid Environment's Resilient Landscape Team focuses on promoting long-term productivity and sustainability in landscapes worldwide. The primary aim is to improve the quality of landscapes and create a productive and healthy environment for all who rely on it. We do so by adapting landscape restoration and regenerative agriculture practices. This occurs alongside the work we do in promoting sustainable value chains in landscapes around the world, which includes mitigating child labour, paying living wages, and adhering to EUDR policies, among others.

Since 2013, our programmes have supported governments, non-profits, and companies in cultivating efficient, effective, and sustainable management of land and water resources by:

- Addressing land and water related sustainability risks in large and small-scale agricultural production
- Adapting and designing context-specific regenerative agriculture and agroforestry practices.
- Implementing landscape restoration of degraded and unproductive areas
- Integrating sustainable livelihoods and entire value chains in our interventions
- Partnering with public and private actors and community-based organisations

We work on landscapes in East Africa, Southeast Asia, and Latin America.



Our current project partners and funders include Rijksdienst voor Ondernemend Nederland (RVO) also known as the Netherlands Enterprise Agency, the IKEA Foundation, and the United Nations High Commissioner for Refugees (UNHCR).



Netherlands Enterprise Agency



IKEA Foundation



Harvesting Health:

Integrating Nutrition and Sustainable Farming in Districts of Mt. Elgon



Set to run from 2024-2027, the project's key strategies include training women in care groups on optimal nutrition, establishing nutrient-dense kitchen gardens, setting up agriculture clubs in schools, establishing agroforestry fruit nursery beds and household seed banks, and providing farmers with training on sustainable food production, soil and water management, post-harvest handling and management and poultry farming.

The Harvesting Health project aims to enhance the nutritional status and food security of communities in the Kapchorwa and Kween districts of Uganda. The project focuses on addressing malnutrition, particularly among women of reproductive age and children under five, through sustainable agricultural practices, advocacy initiatives, and nutrition education.



“Being part of this very transformative project is a huge deal. It enables us to do what we like doing the most - working with communities to improve their livelihoods. The Harvesting Health project is being implemented at a time when households in the Mt. Elgon region are struggling to consume diverse and nutrient-dense diets because of climate change and its effects. Through promoting sustainable farming, this project provides an opportunity to achieve the triple objectives of adapting to climate change, mitigating its effects, and improving food security”. - Dismas Cheptook, project manager of Harvesting Health project

Implementing partners: AidEnvironment, Food for the Hungry Association, and Kapchorwa Civil Society organisation Alliance (KACSOA).

Funder: Netherlands Enterprise Agency (RVO)



Netherlands Enterprise Agency



FH ASSOCIATION

KEY RESULTS FROM 2024

Inception meeting held in August 2024

engaged 204 key stakeholders from the districts of Kapchorwa and Kween. The launch raised awareness about intended interventions to foster collaboration between partners, local governments, institutions and the community for sustainable change.

Entry Meetings were conducted at the District, Sub County, parish, school and community levels to build relationships, contextualise the project, and foster stakeholders buy-in. Key shareholders identified and selected include farmer groups, schools, local leaders, and Village Health Teams (VHT's). These meetings facilitated the creation and recruitment of farmer and care groups for the project.

A Baseline Survey was conducted among identified project participants across Kapchorwa and Kween districts to establish and determine the current status of individual households in the target areas. The baseline survey sets a benchmark upon which the impact of the interventions will be measured. The final baseline report that best outlines the key findings will be published early in 2025.

Identification of Tree Nursery bed sites and operators:

The team conducted a series of engagements with community leaders to identify suitable sites for nursery bed establishment and/or expansion, as well as identifying key operators who will be in charge of the day-to-day running and management of tree seedlings in the nursery bed.



5 nursery bed sites and 10 operators have been identified.

83

female stakeholders

121

male stakeholders

Participating stakeholders included district political leaders and technical department heads, head teachers, students, caregivers and farmers, and representatives from Ministries of Health, Education, and Sports.

2,072

farmers recruited

555

care groups formed

33

schools engaged and selected

376

A total of 274 female and 102 male shareholders, across both farmers and care groups were reached as respondents in the survey.



Harvesting Health

Improving Water Efficiency and Biodiversity Conservation in the Colombian Coffee Sector

This project, funded by the Netherlands Enterprise Agency (RVO) through the Partners for Water programme, aims to promote sustainability and resilience in the Colombian coffee sector.

Focused on the Fundación and Aracataca watersheds in the Magdalena region, the project addresses critical challenges such as water scarcity, pollution, and biodiversity loss. Located near the ecologically and culturally significant Sierra Nevada de Santa Marta, these watersheds support smallholder farmers whose livelihoods depend on the available natural resources.

AidEnvironment leads the development of innovative, scalable solutions based on regenerative agriculture and sustainable landscape management. Fundación Herencia Ambiental Caribe (Fundaherencia) engages with local and indigenous communities, including the Arhuaco people of Umake, ensuring cultural sensitivity and alignment with local governance. Deltares provides technical expertise in water resource management and biodiversity conservation, ensuring robust, science-based solutions.



The project seeks to revolutionise water and nutrient management in coffee farming by developing systems that conserve water, prevent pollution from nutrient runoff, and enhance soil fertility through nutrient circularity. A pilot farm, developed with community collaboration, will showcase these practices as a replicable model that balances environmental protection with cultural and economic sustainability.

Implementation partners: consortium led by AidEnvironment, in partnership with Fundación Herencia Ambiental Caribe and Deltares

Time period: 2024-2026

Funder: RVO through Partners for Water



Deltares

GOALS MOVING FORWARD

As the pilot progresses, detailed impact numbers will become available next year.

However, the project is already setting ambitious targets. The initiative aims to reduce water pollution from coffee production to zero by capturing and reusing nutrient-rich water, ensuring it does not enter natural ecosystems untreated.

Water use is expected to decrease by at least 80%, thanks to innovative retention and reuse systems.



In the long run, these practices are anticipated to enhance soil fertility and significantly increase coffee production. By achieving these goals, the project will create a replicable model for sustainable coffee farming that balances environmental conservation with economic benefits.



Additionally, the project seeks to reduce farmers' expenditure on fertilisers by promoting nutrient circularity, which retains valuable nutrients within the farming system.



Going Bananas! Expands Work in the Philippines

In 2024 the Going Bananas project generated good momentum. Together with local partners, the AidEnvironment team worked toward reaching the target of training 2,000 farmers on agroforestry farm design, in the Farmer Field School.

The importance of partnerships in galvanising the regenerative agriculture movement, was exemplified by the support we received from various agencies. The Philippine Coconut Authority provided the farmers with over 20,000 coconut seedlings, while the regional Department of Agriculture provided fruit tree seedlings. For its part, the municipality of Carmen approved a policy ordinance to invest in organic agriculture.

As of December 2024, the project has reached 1,683 farmers.



Working closely with local stakeholders is crucial – it's how we achieve project goals, ensure sustainable livelihoods, and foster community development
- Jeff Tan, Coordinator, Going Bananas

Implementation Partners: University of Southern Mindanao, Bern University, Treelife, COSFA, Municipality of Carmen

Time period: 2020-2025



Netherlands Enterprise Agency



TREELIFE™



Supporting Community Implementation of Catchment Management Measures in Lwakhakha Sub-Catchment

The project aims to support communities in Lwakhakha Sub-catchment, in Mpologoma Catchment in the Kyoga Water Management Zone (KWMZ) in Eastern Uganda to implement catchment-based and community-driven actions. AidEnvironment was contracted by the Ministry of Water and Environment (MWE) to support communities in implementing catchment-based management measures including tree growing, soil and water conservation, riverbank protection, and providing alternative livelihoods for affected communities.

**Implementation partners:**

International Union for Conservation of Nature (IUCN)

Time period: February 2022 – March 2025

Funder: Ministry of Water and Environment with a loan from the World Bank



KEY RESULTS FROM 2024

165.52

hectares established for soil and water conservation measures

2,169

community members mobilised and trained on the importance of riverbank protection, restoration and management.



1,844 males



325 females

400

households trained and supported in establishing alternative income-generating (livelihood) activities including construction of improved energy cook stoves, fodder production, establishment of apiaries, and fish farming.



2.85KM

stretch of gullies treated with gully plugs to control erosion and siltation downstream of the sub-catchment.



213,631

tree seedlings planted, covering 369ha with tree growth across the areas of Tororo, Manafwa, Namisindwa.

DEFORESTATION-FREE SUPPLY CHAINS

Since 2013, AidEnvironment's Deforestation-Free Supply Chains (DFSC) team has been at the forefront of monitoring and analysing sustainability risks. Over the past decade, we have focused on translating the sustainability performance of companies in global commodity sectors into financial risks, contributing to the growing importance of socio-environmental risks in the financial sector. Our core mission is to make deforestation-free supply chains the norm.

Since 2019, we have been developing a Real-time Deforestation Monitoring (RDM) programme, covering commodities like soy, cattle, palm oil, cocoa, coffee, timber, and pulp & paper. This programme links production in origin countries to global markets.

In 2024, we strengthened collaborations with civil society, legal organisations, and journalists by producing actionable research, real-time evidence, and global supply chain mapping. We also began developing the Compliance Checker tool, which integrates all our areas of expertise and provides a data and analysis hub that facilitates tailored action for deforestation-free supply chains.

Our current and past project partners/funders include: ClientEarth, the European Climate Foundation, the European Commission (Erasmus + and EU Life Programmes), Norad/Nicfi.

ClientEarth⁺



European
Climate
Foundation

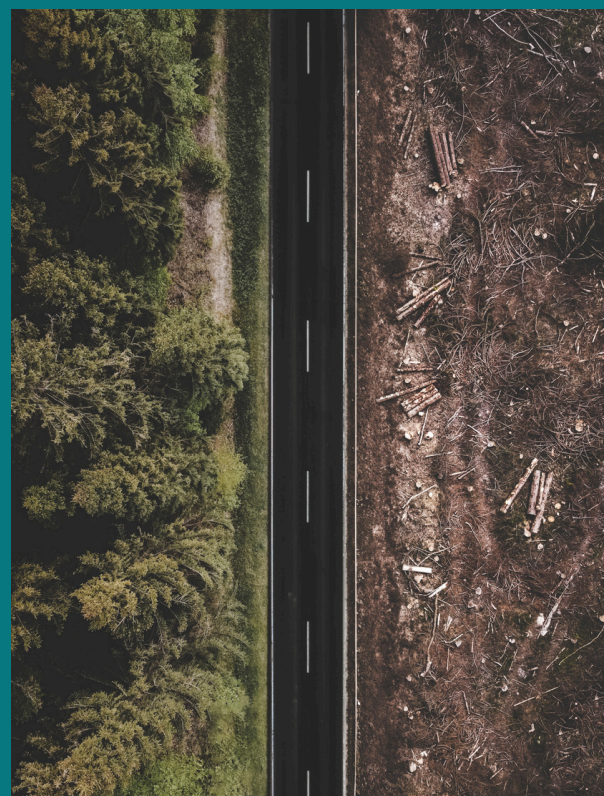


Norad



NICFI

Norway's International Climate and Forest Initiative

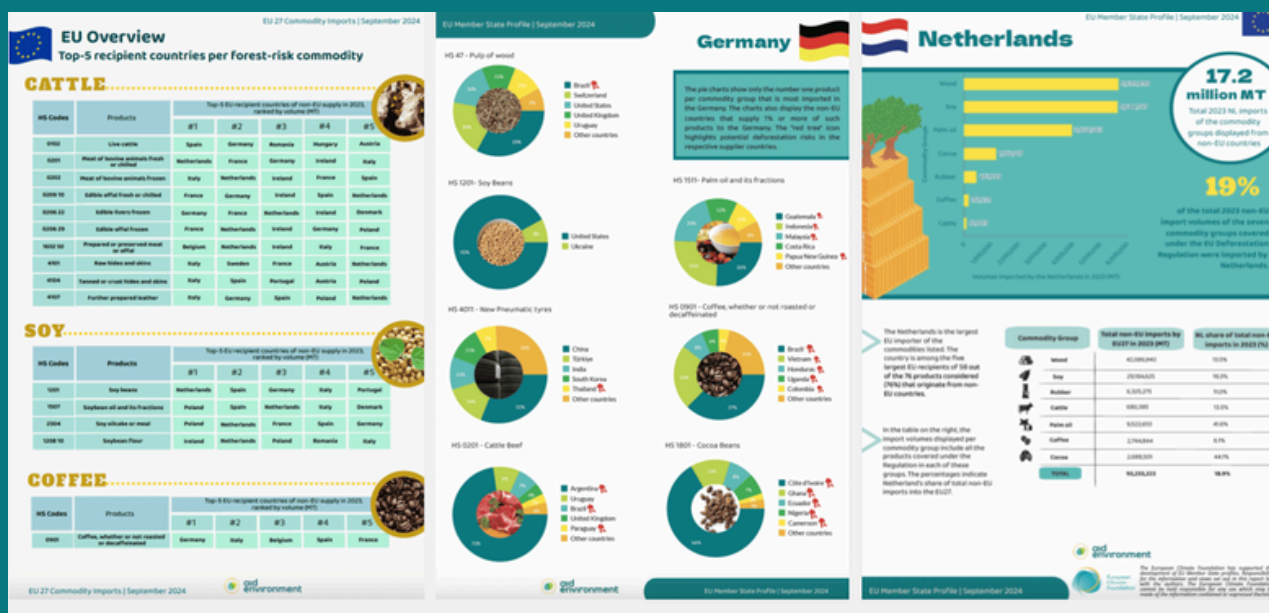


“The DFSC team uses publicly available data and real-time research to provide strong evidence and case studies on the socio-environmental impacts of commodity production. Our supply chain mapping and sector benchmarking work has helped strengthen campaigns and advocacy for more transparency and traceability. But there's still much to do. We hope that one day, global commodities can be produced without causing harm to forests, biodiversity, or the people who live in and protect them.”

— Marco Garcia, DFSC team GIS Coordinator

Trade and Deforestation Risk Profiles of EU Member States

AidEnvironment's country risk profiles provide an overview of EU Member States' imports of key commodities in the EU Deforestation Regulation (EUDR) scope. Client Earth supported the initial analysis in 2022, and the European Climate Foundation in 2024. The new insights can be found in the 27 fact sheets AidEnvironment published in September 2024. The country profiles included the analyses of 2023 trade data for 76 products within cattle, cocoa, coffee, palm oil, soy, wood, and rubber commodity groups, allowing the identification of which EU member states are at higher risk of importing commodities linked to deforestation.



Time period: 2022-2025

Funder: European Climate Foundation and Client Earth.

KEY RESULTS FROM 2024

AidEnvironment uses the member state profiles as a powerful data and research tool to engage with civil society organisations, member states' competent authorities, and other partners and support actions aimed at an effective and strong implementation of the EUDR.

The EU27 import profiles are also one of the pillars of the Compliance Checker initiative.



27 **Country profiles developed.**

Each profile provides detailed insights into trade flows, including key supplying and importing countries, major imported commodities, and potential exposure to deforestation risks.



76 **products** within cattle, cocoa, coffee, palm oil, soy, wood, and rubber commodity groups covered in research

EMMA4EU - Innovation Alliance for Training Programmes for Deforestation-Free Supply Chains in Europe

The EMMA4EU project aims to develop innovative approaches to education and training on reducing deforestation risk in supply chains. The project, co-funded by the European Commission, bridges different disciplines and sectors in forestry, agriculture, and business and commerce, connecting key actors through an alliance. This will enable knowledge exchange and create a new profession: the Deforestation-Free Supply Chains Manager.

AidEnvironment contributes with methods and content for the project's training programmes using its expertise in mapping and monitoring supply chains' impacts.

Implementation partners: Etifor, Università degli Studi di Padova, Wageningen University & Research (WUR), Preferred by Nature, Albert Ludwig University of Freiburg, OpenForests, Copenhagen Business School, Makerere University, Fòrema.

Time period: 2023 - 2026

Funder: European Commission – Erasmus+ Programme



KEY RESULTS FROM 2024

In 2024, the EMMA4EU project launched its Innovation Alliance to encourage knowledge exchange and collaboration on Deforestation-Free Supply Chains (DFSC). The initiative featured 20 video case studies on existing DFSC initiatives and tools that can be helpful in the implementation of the EU Deforestation Regulation (EUDR).

AidEnvironment has directly contributed to this, namely on initiatives linked to cattle and soy supply chains (Selo Verde and Beef on Track, and the Amazon Soy Moratorium and Soft Commodity Forum, respectively). Additionally, the project team conducted a training needs assessment and designed curricula for its first DFSC e-learning course, set to begin in January 2025.

10



10 implementing partners based in 5 different countries (Denmark, Germany, Italy, the Netherlands, and Uganda)

125



125 hours of e-learning specialisation training in deforestation-free supply chain management (currently under content and structure preparation).



universität freiburg



Realtime Deforestation Monitoring Programme – Soy and Cattle in Brazil

Aidenvironment's Real-time Deforestation Monitoring (RDM) programme creates an accountability system to report on the socio-environmental impacts of commodity production.

Using satellite imagery, supply chain analysis, and field research, RDM connects these impacts to supply chain actors such as producers, traders, and retailers.

The programme's analysis supports Mighty Earth's Rapid Response Program and the Rainforest Foundation Norway's Sustainable Businesses Program (focused on leather).

In its analysis of beef in Brazil, RDM collaborates with the [Do Pasto ao Prato](#) app and [Repórter Brasil](#) for data validation and produces case studies and supporting evidence for journalistic investigations.

Implementation partners: Repórter Brasil, Mighty Earth, Trase (do Pasto ao Prato), Rainforest Foundation Norway, and others.

Time period: 2023 – 2025

Funder: European Climate Foundation, Norad/Nicfi, EU Life



KEY RESULTS FROM 2024

Rapid Response reports supported Mighty Earth's engagement with soy traders, meatpackers, and retailers. The **Cattle Report #3** was mentioned in the **New York Times**, showing that chemicals are back as a deforestation tool.

The report **Hide on the Highway**, produced in collaboration with Rainforest Foundation Norway, supported their engagement with the automotive sector on leather sourcing from Brazil and its evident links to deforestation in the Amazon forest.

**71**

registrants to the online launch of the "Hide on the highway" report, prepared by AidEnvironment for Rainforest Foundation Norway.

**50+**

companies in 5 EU Member States were mapped and identified as Brazilian leather importers. Most of these companies - tanneries, wholesalers, traders, and downstream companies - are based in Italy.

**61,500**

hectares of real-time native vegetation conversion, distributed among 56 case studies, were reported.

**32**

cases were identified in the Cerrado, followed by 17 in the Amazon, 5 in the Pantanal, 1 in Indonesia, and 1 in Ivory Coast.

LOOKING AHEAD TO 2025

AidEnvironment is poised to deepen its impact and expand its reach in fostering sustainable practices through projects across the world. This year, we will continue to amplify the voices and innovations of local communities, recognising them as the true drivers of transformative change.

We will also continue to provide actionable research and insights to encourage compliance with sustainability measures in the sourcing and trading of coffee, cocoa, soy, beef, rubber, palm, timber -- the seven EUDR commodities. Success in this collective effort will protect our forests, preserve biodiversity, and support the communities reliant on these ecosystems, as well as our life on Earth.

Our goals for the year include analysing and presenting the level of compliance of relevant companies and states, and demonstrating how sustainable changes can be adopted by scaling up regenerative agricultural initiatives, broadening the adoption of climate-resilient practices, and driving grassroots solutions that prioritise both environmental sustainability and economic resilience. By continuing to nurture partnerships we strive to create ripple effects that extend far beyond our immediate projects.



COLLABORATE WITH US

Compliance Checker

In 2025, AidEnvironment, with the support of the European Climate Foundation and Coffee Watch, is advancing the Compliance Checker –a dynamic tool that integrates real-time deforestation monitoring, supply chain mapping, and sustainability risk analysis. Designed to support civil society, media, and legal organisations, it will help gather evidence for advocacy, climate litigation, and compliance with regulations like the EU Deforestation Regulation (EUDR) and the Corporate Sustainability Due Diligence Directive (CSDDD). To expand its impact and effectiveness, we are looking for further collaboration opportunities.

Nature-Based Solutions

At AidEnvironment, we are actively developing our expertise in nature-based solutions, recognising their crucial role in restoring ecosystems, enhancing climate resilience, and supporting sustainable livelihoods. By leveraging natural processes, we aim to address environmental challenges such as water security, land degradation, and biodiversity loss. As we expand our work in this field, we are seeking collaboration opportunities with partners who share our vision for scalable, impactful solutions. Whether through research, project implementation, or knowledge exchange, we welcome opportunities to co-create and drive meaningful change for people and nature.

CONTACT US

The changes and impact we aspire to make can only be achieved if we work together and support like-minded organisations and individuals. If you are working on similar issues, we would love to connect to find ways to collaborate.

For those interested in projects related to water and landscape management or regenerative agriculture, please contact Lysanne Vergroesen at vergroesen@aidenenvironment.org

For those interested in projects related to action research or deforestation-free supply chains, please contact Joana Faggin at joana@aidenenvironment.org

For general inquiries, please contact info@aidenenvironment.org

