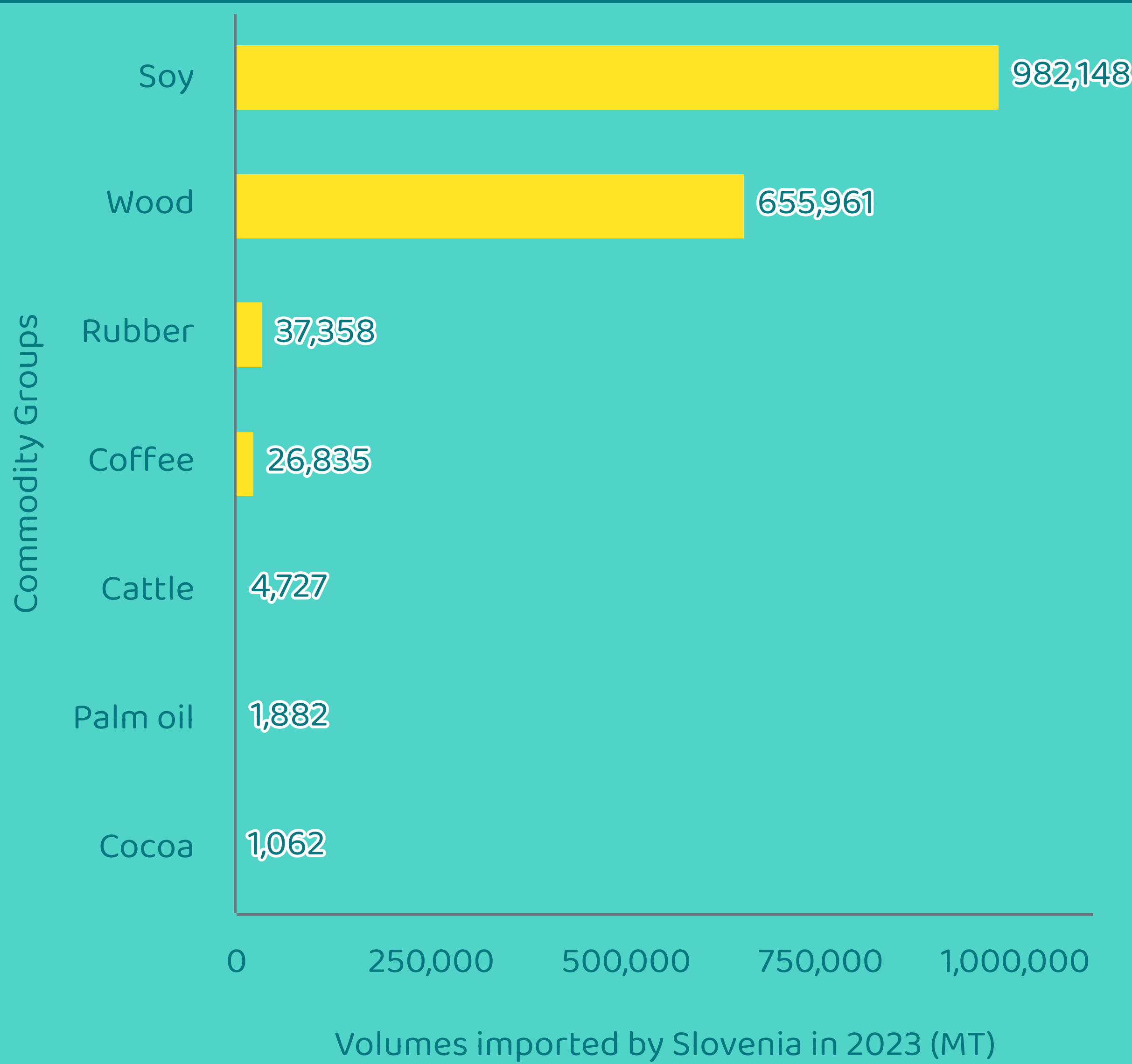
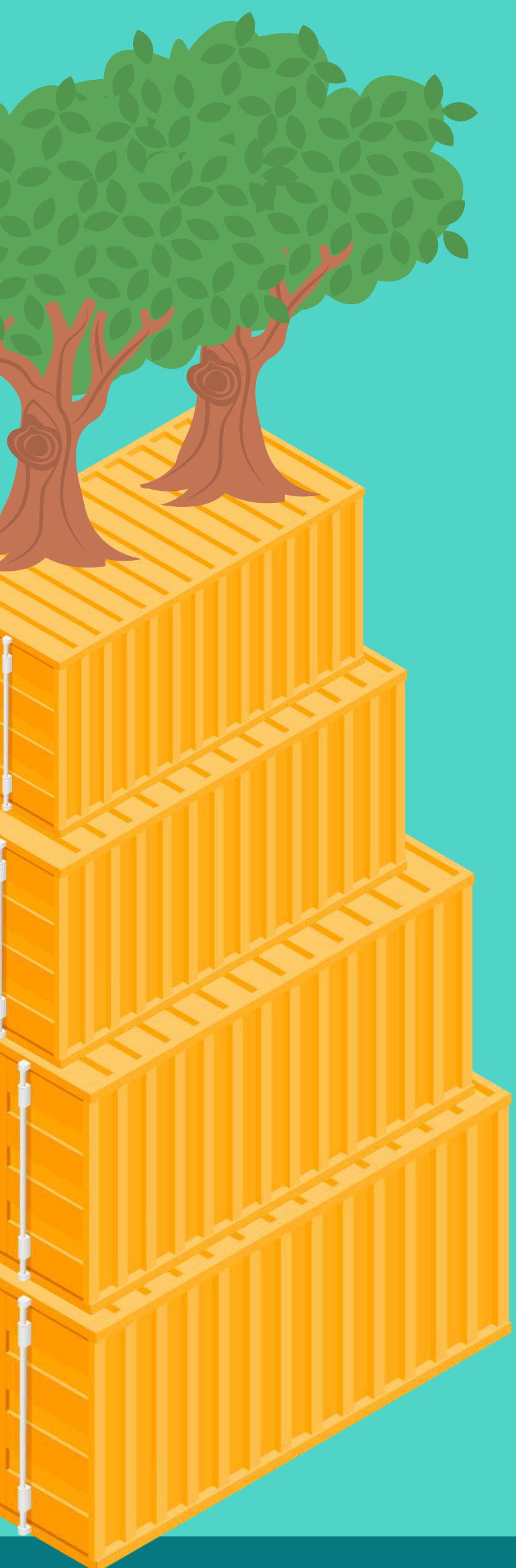




# Slovenia



**1.7 million MT**

Total 2023 SI imports of the commodity groups displayed from non-EU countries

**2%**

of the total 2023 non-EU import volumes of the seven commodity groups covered under the EU Deforestation Regulation were imported by Slovenia.

Slovenia's largest contribution to total EU imports from non-EU countries in 2023 was made in soy products.

In the table on the right, the import volumes displayed per commodity group include all the products covered under the Regulation in each of these groups. The percentages indicate Slovenia's share of total non-EU imports into the EU27.

Commodity Group	Total non-EU imports by EU27 in 2023 (MT)	SI share of total non-EU imports in 2023 (%)
Wood	42,086,940	1.6%
Soy	29,184,625	3.4%
Rubber	6,325,275	0.9%
Cattle	680,385	0.7%
Palm oil	9,522,653	<0.1%
Coffee	2,744,844	1.0%
Cocoa	2,688,501	<0.1%
<b>TOTAL</b>	<b>93,233,223</b>	<b>1.9%</b>

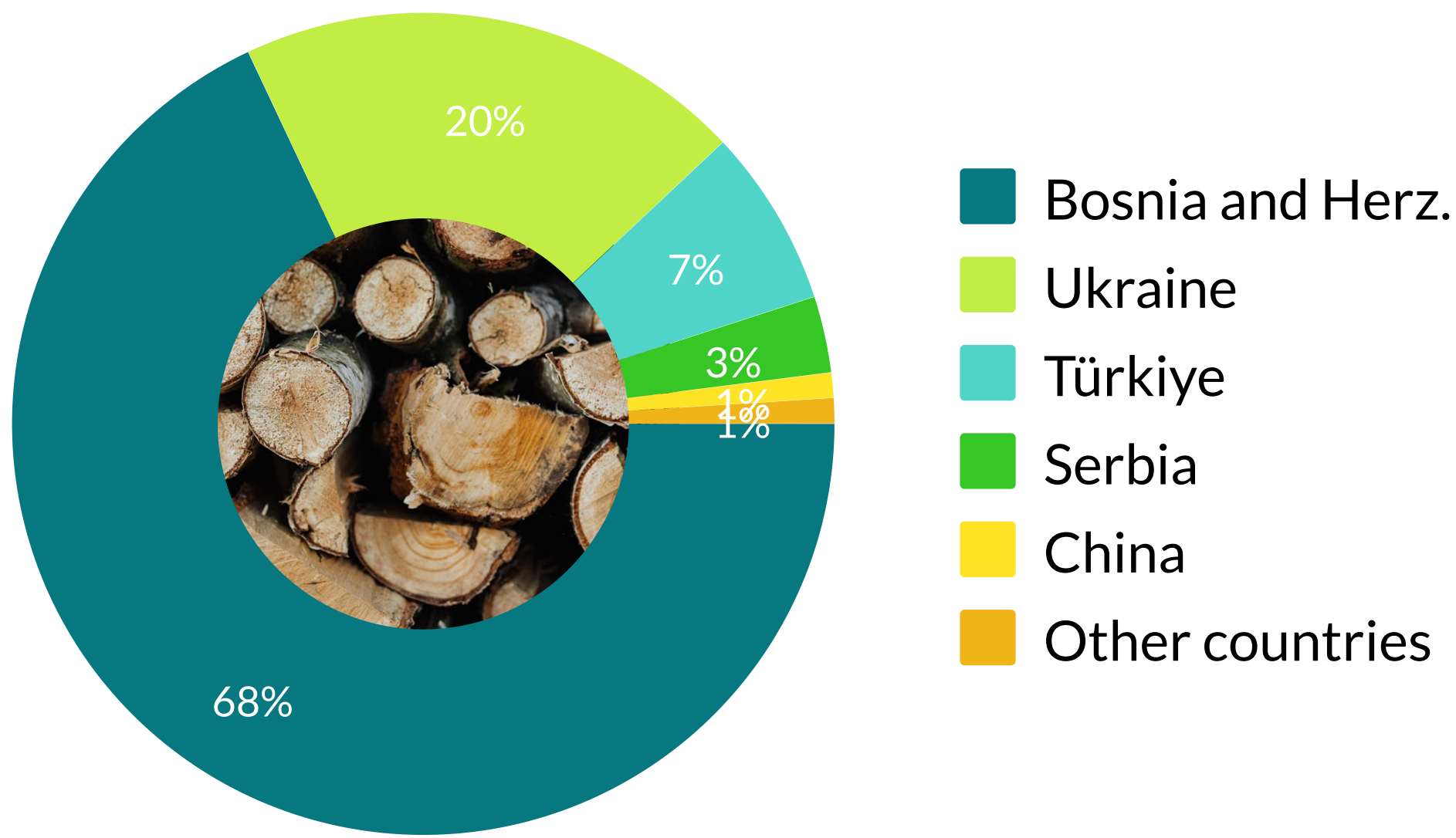


The European Climate Foundation has supported the development of EU Member State profiles. Responsibility for the information and views set out in this report lies with the authors. The European Climate Foundation cannot be held responsible for any use which may be made of the information contained or expressed therein.



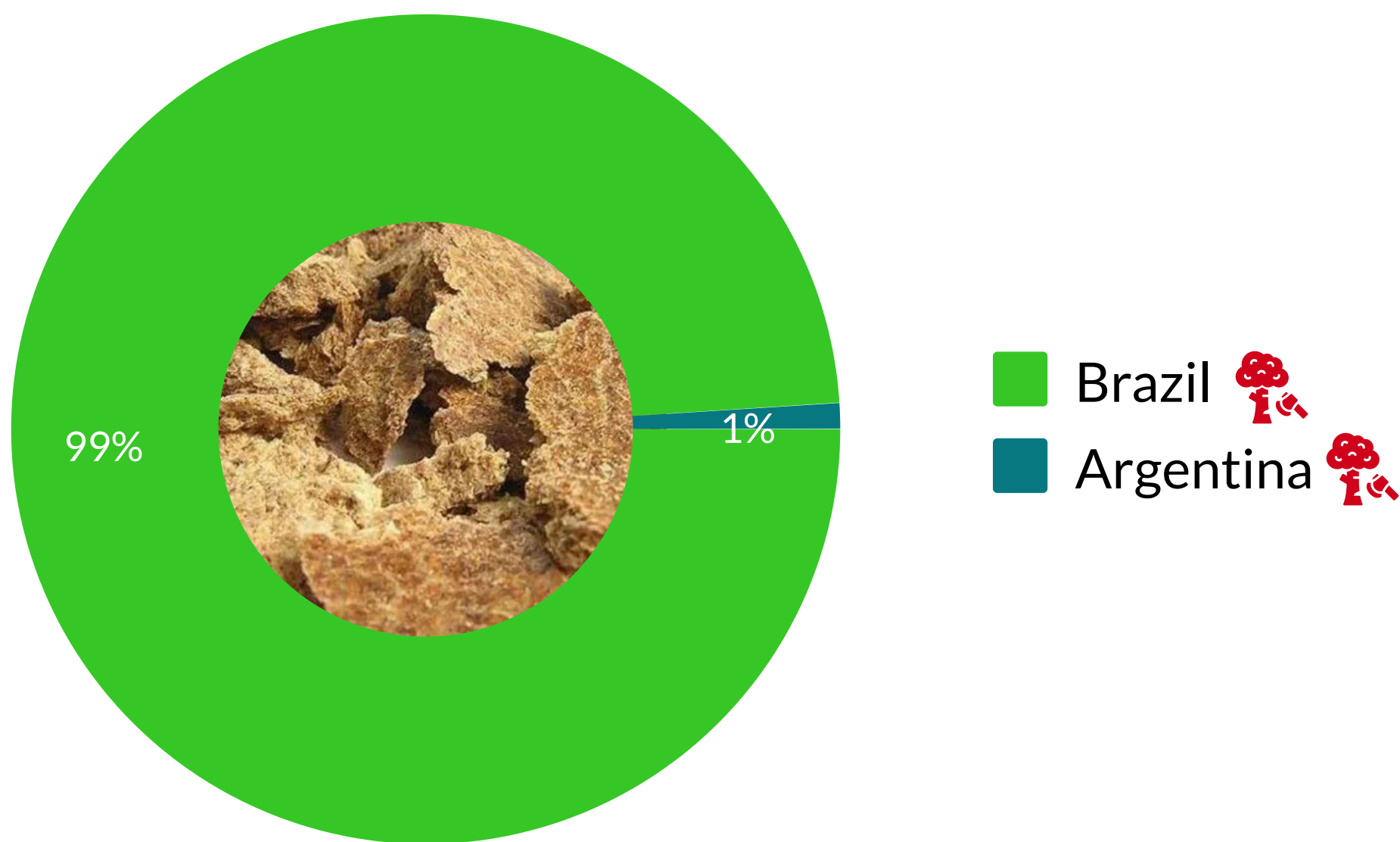


HS 4401 - Fuel wood

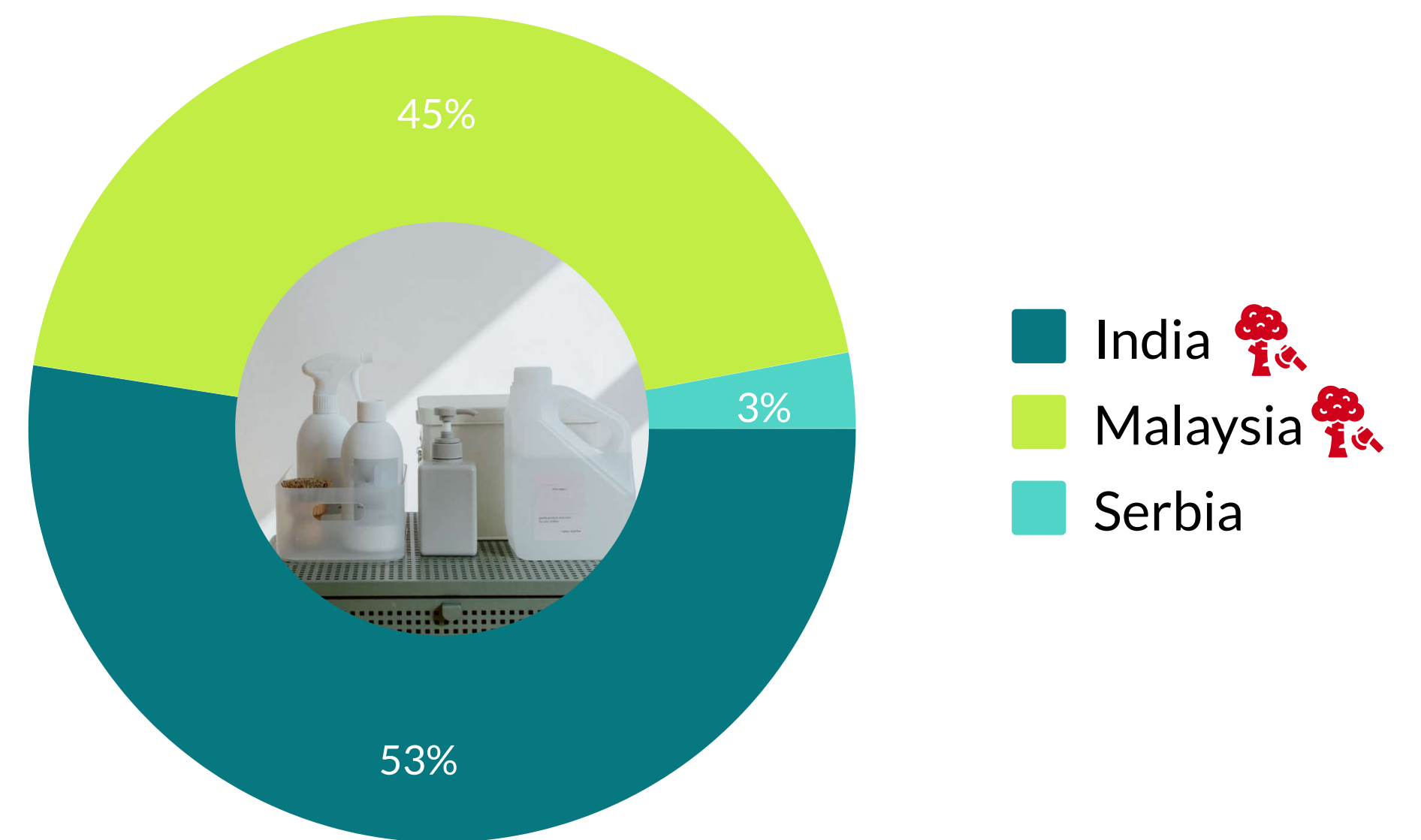


The pie charts show only the number one product per commodity group that is most imported in the Slovenia. The charts also display the non-EU countries that supply 1% or more of such products to the Slovenia. The "red tree" icon highlights potential deforestation risks in the respective supplier countries.

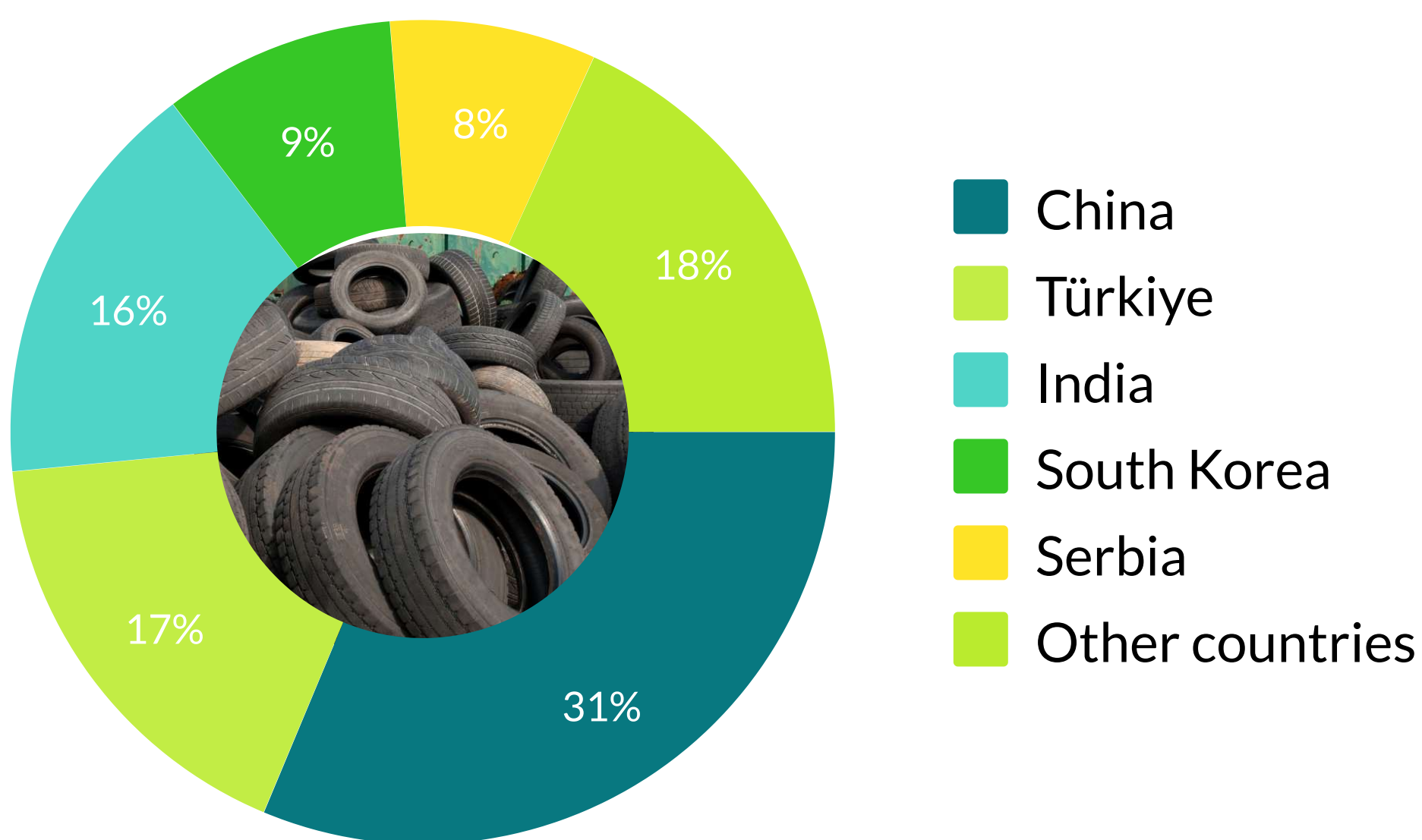
HS 2304- Soy Oilcake



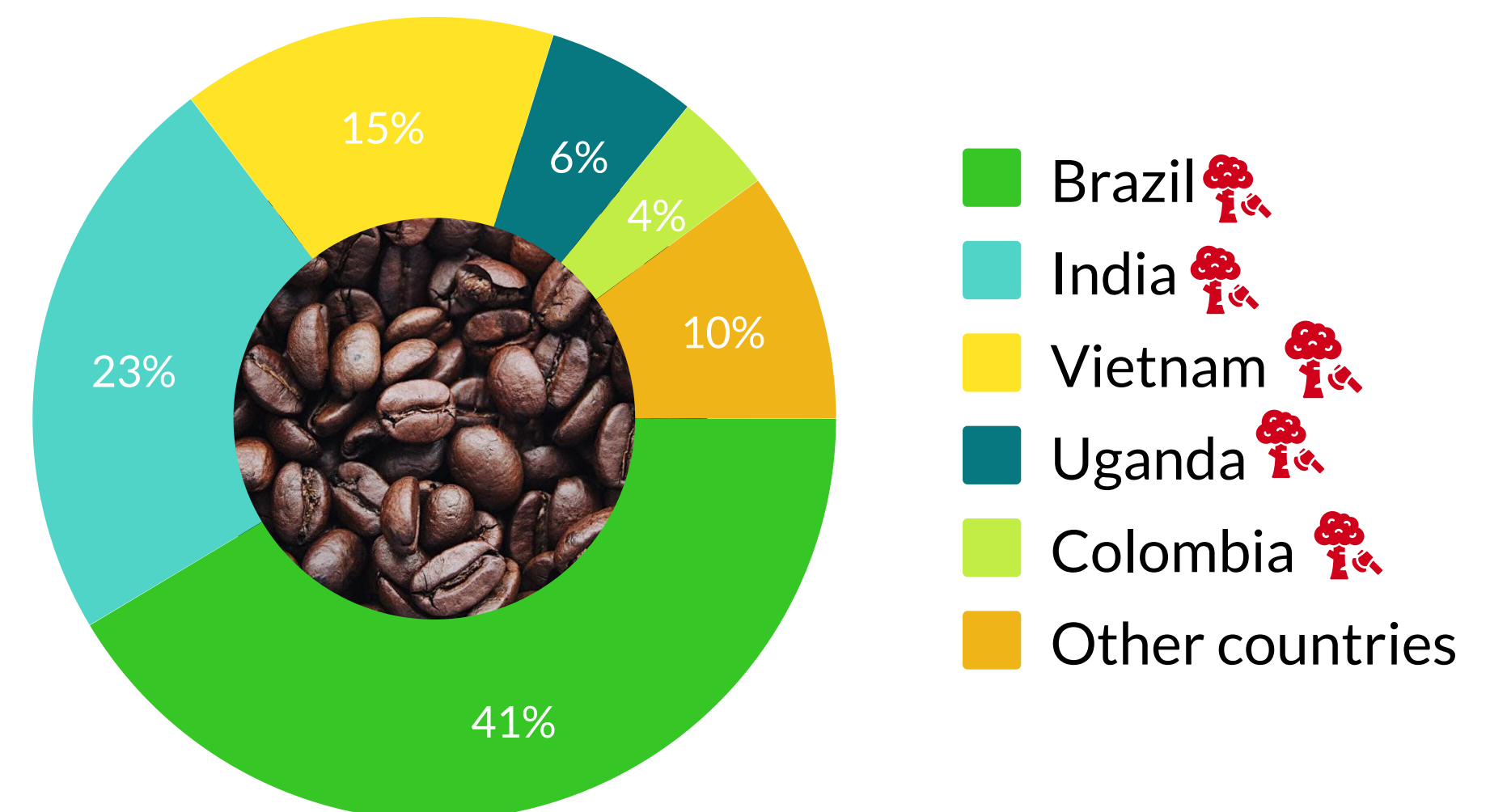
HS 382319- Fatty acids, industrial, monocarboxylic



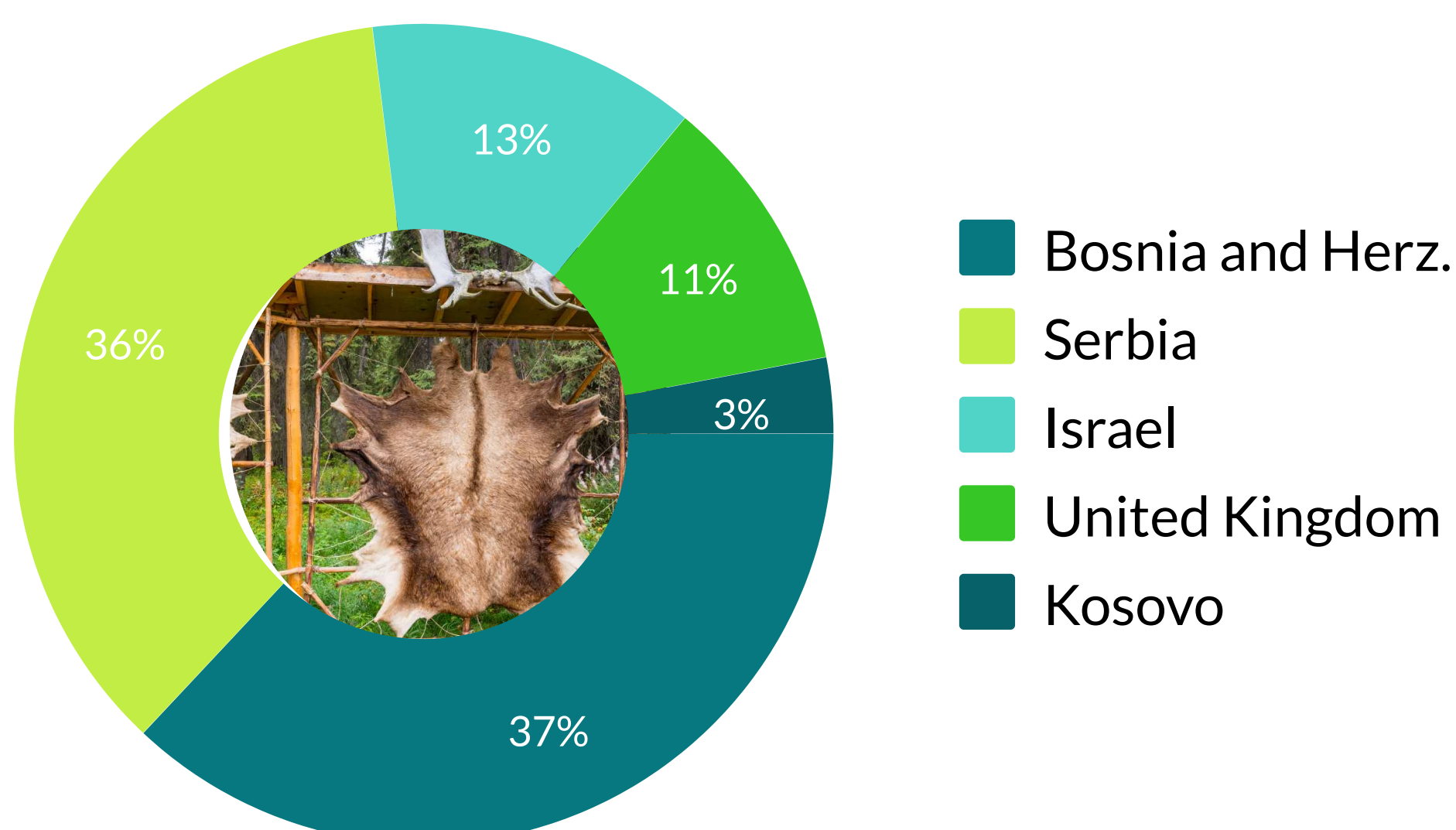
HS 4011 - New pneumatic tyres



HS 0901 - Coffee, whether or not roasted or decaffeinated



HS 4101 -Cattle tanned or crust hides and skins



HS 1806 - Chocolate and other food preparations containing cocoa

