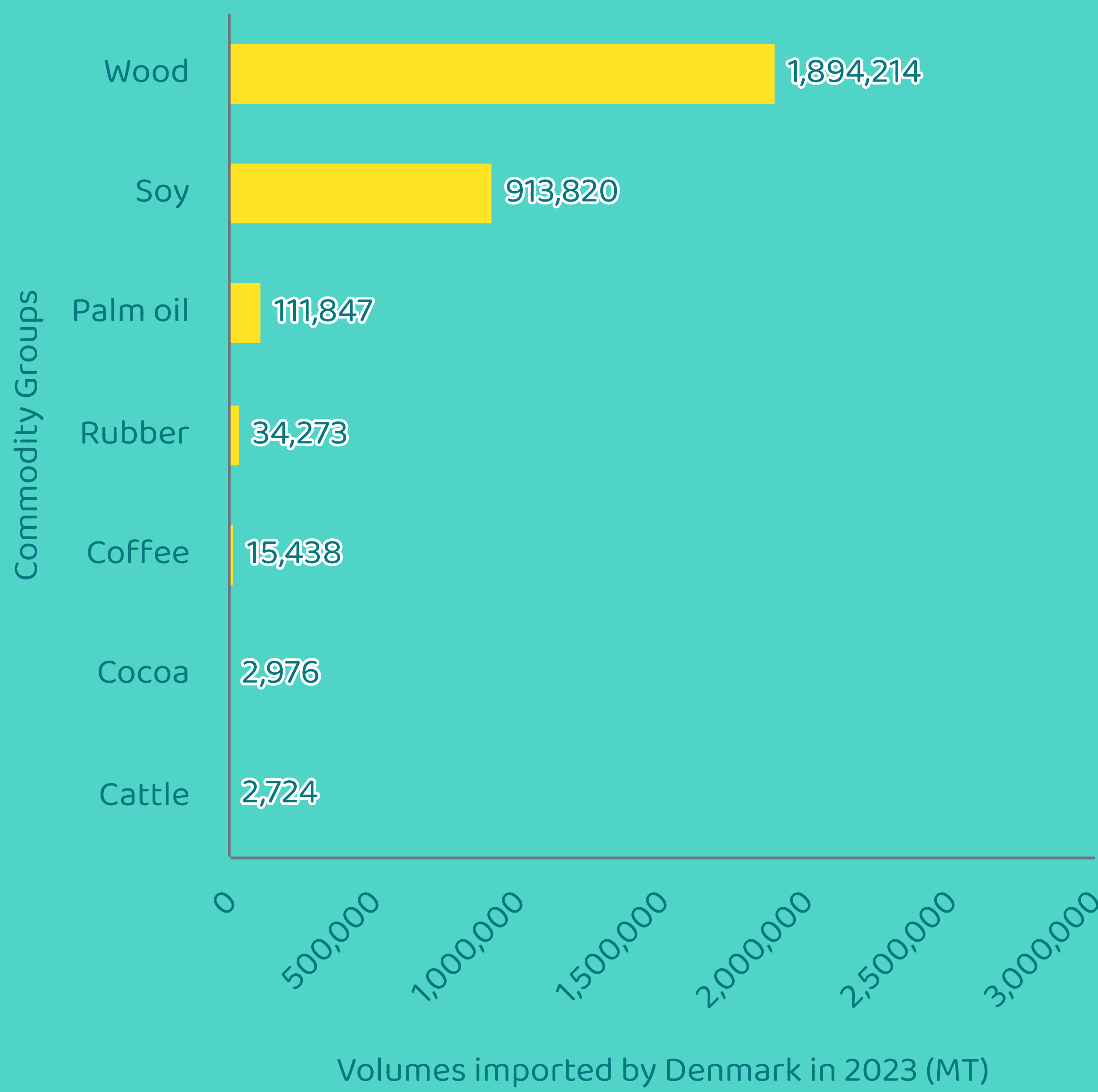


# Denmark



**3.0 million MT**

Total 2023 DK imports of the commodity groups displayed from non-EU countries

**3%**

of the total 2023 non-EU import volumes of the seven commodity groups covered under the EU Deforestation Regulation were imported by Denmark.

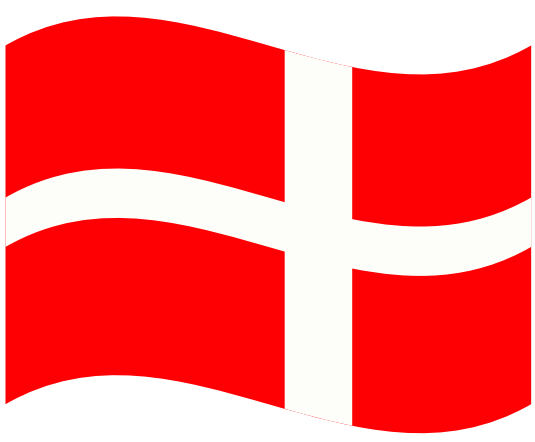
Denmark's largest contribution to total EU imports from non-EU countries in 2023 was made in wood and soy.

In the table on the right, the import volumes displayed per commodity group include all the products under the Regulation in each of these groups. The percentages indicate Denmark's share of total non-EU imports into the EU27.

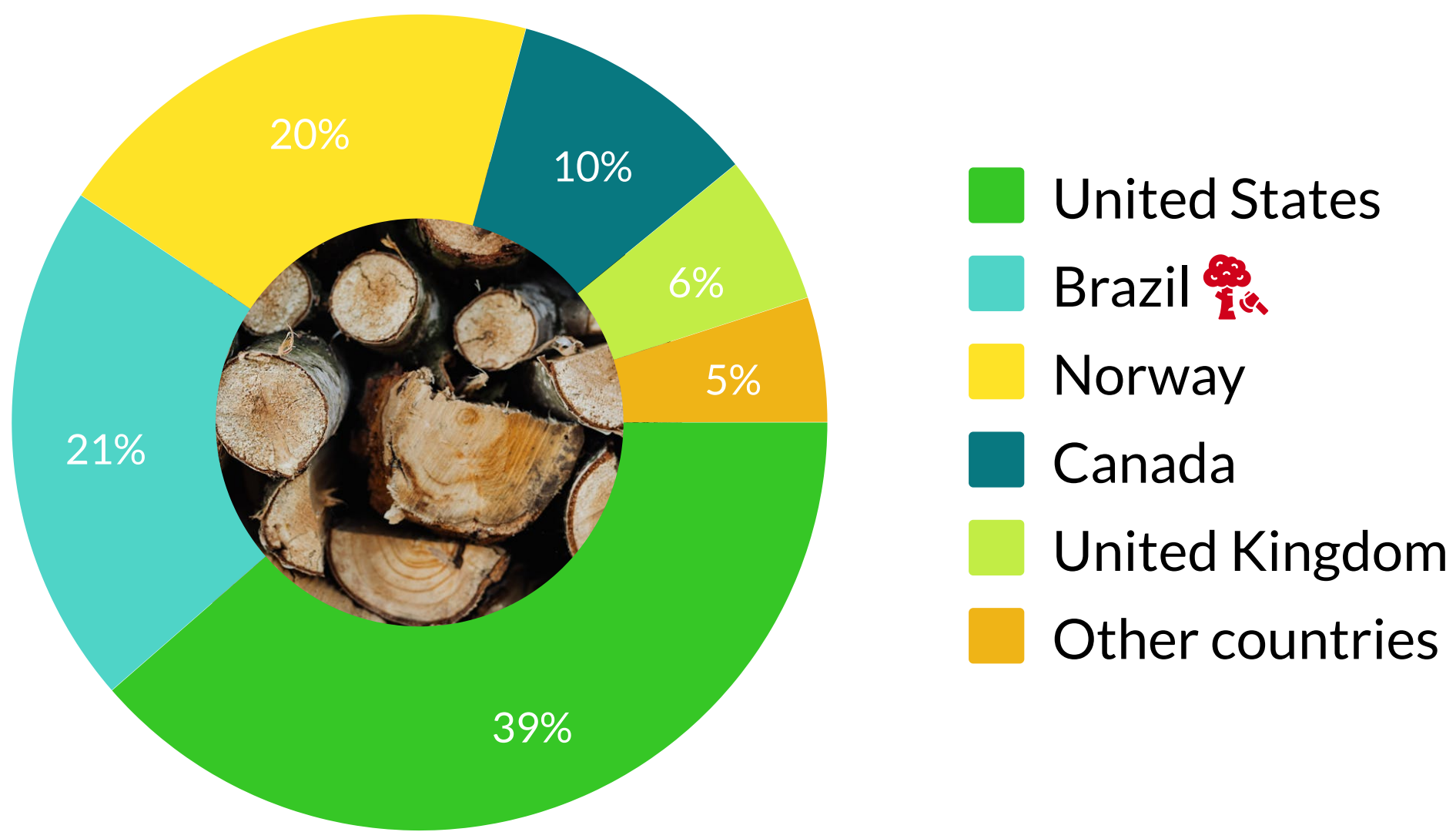
Commodity Group	Total non-EU imports by EU27 in 2023 (MT)	DK share of total non-EU imports in 2023 (%)
Wood	42,086,940	4.5%
Soy	29,184,625	3.1%
Rubber	6,325,275	0.8%
Cattle	680,385	0.4%
Palm oil	9,522,653	1.2%
Coffee	2,744,844	0.6%
Cocoa	2,688,501	0.1%
<b>TOTAL</b>	<b>93,233,223</b>	<b>3.3%</b>



The European Climate Foundation has supported the development of EU Member State profiles. Responsibility for the information and views set out in this report lies with the authors. The European Climate Foundation cannot be held responsible for any use which may be made of the information contained or expressed therein.

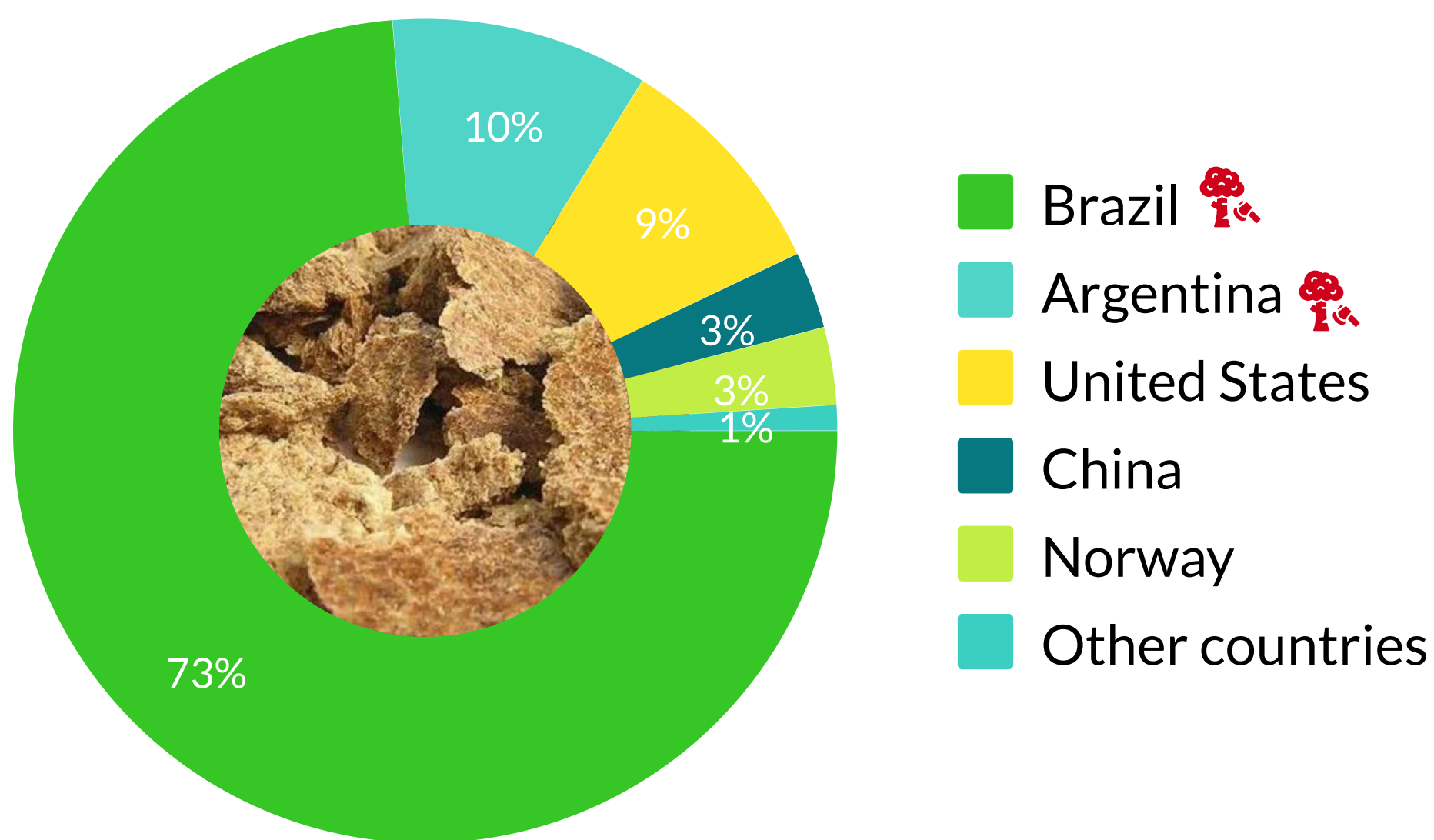


## HS 4104 - Fuel Wood

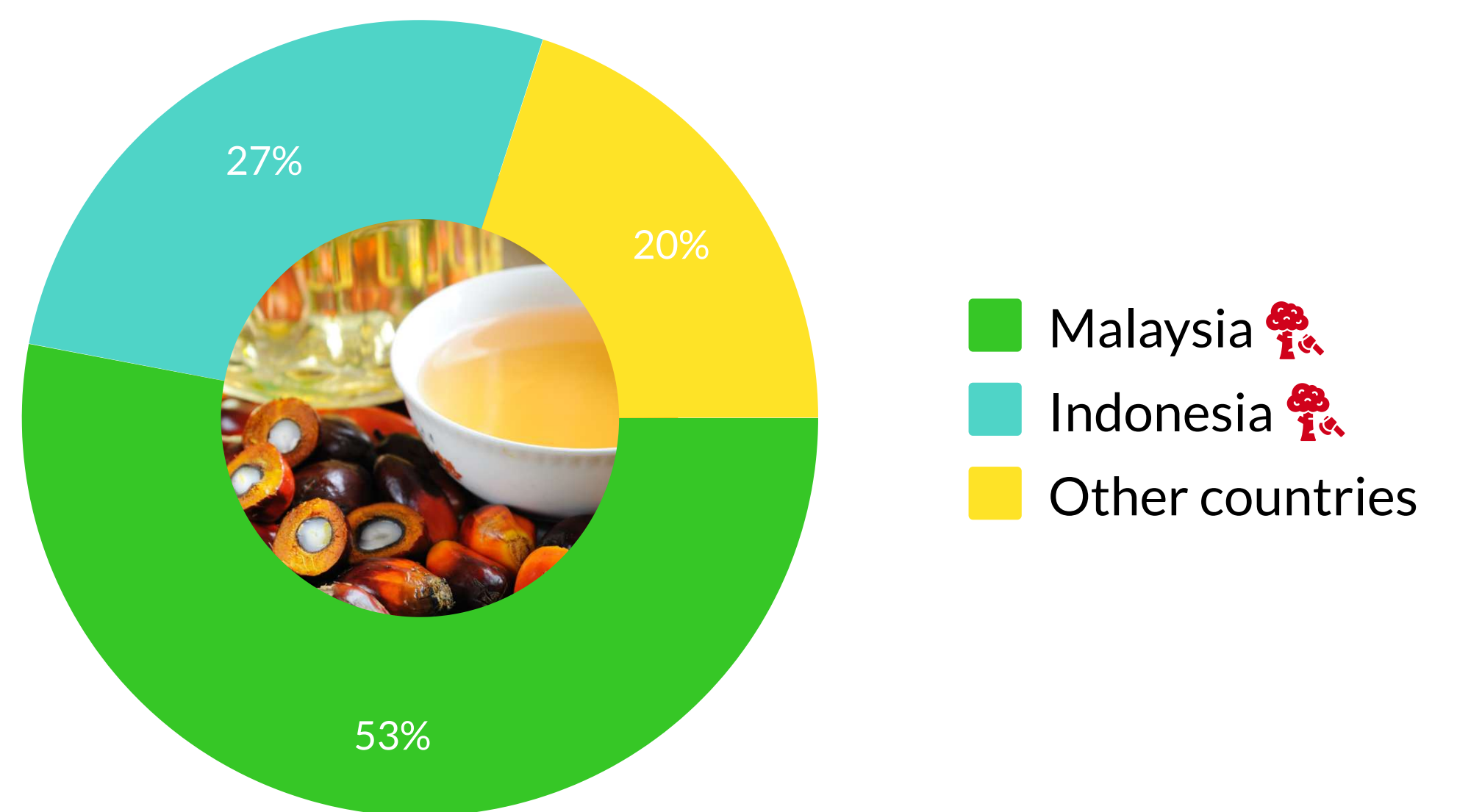


The pie charts show only the number one product per commodity group that is most imported in the Denmark. The charts also display the non-EU countries that supply 1% or more of such products to the Denmark. The "red tree" icon highlights potential deforestation risks in the respective supplier countries.

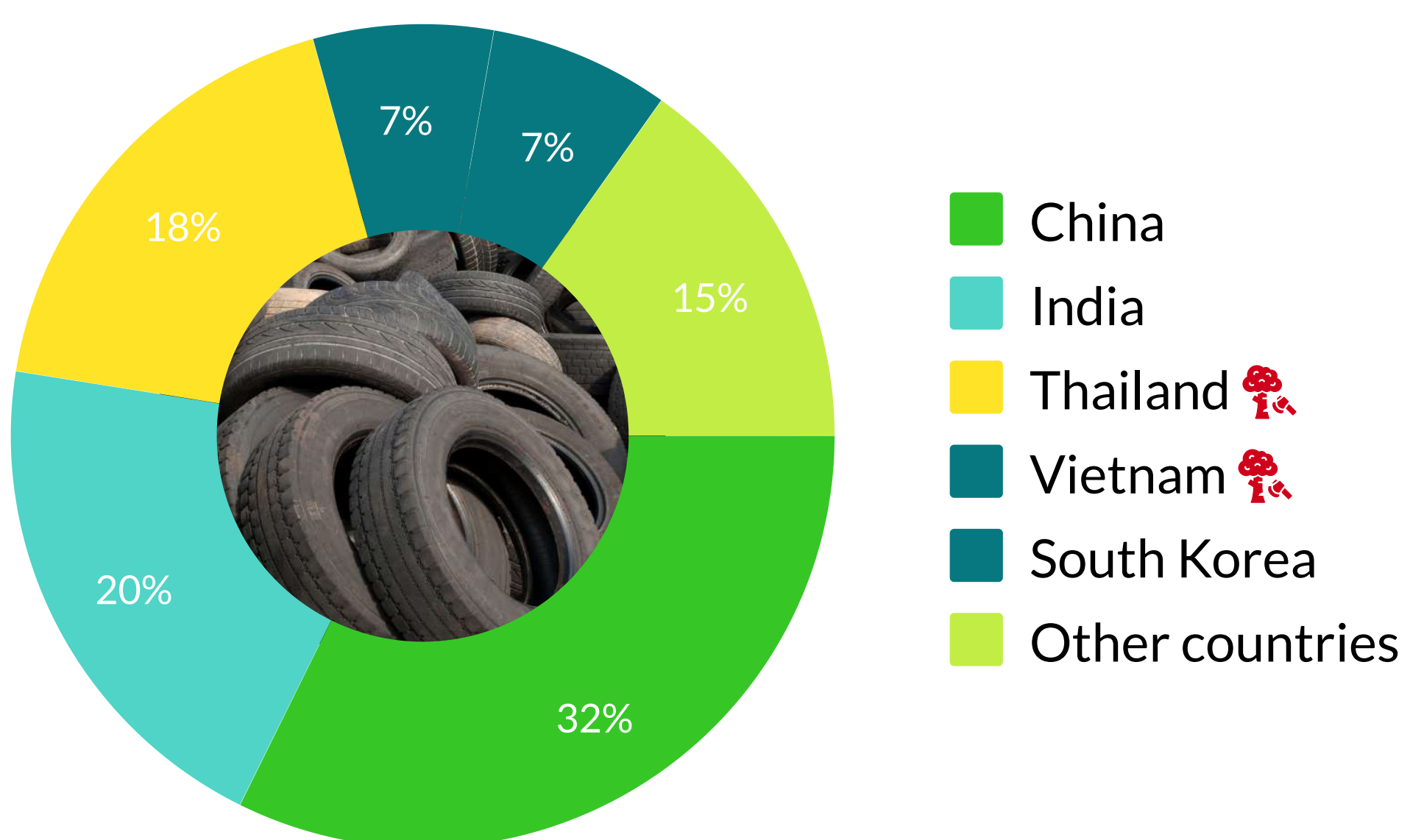
## HS 2304- Soy oilcake



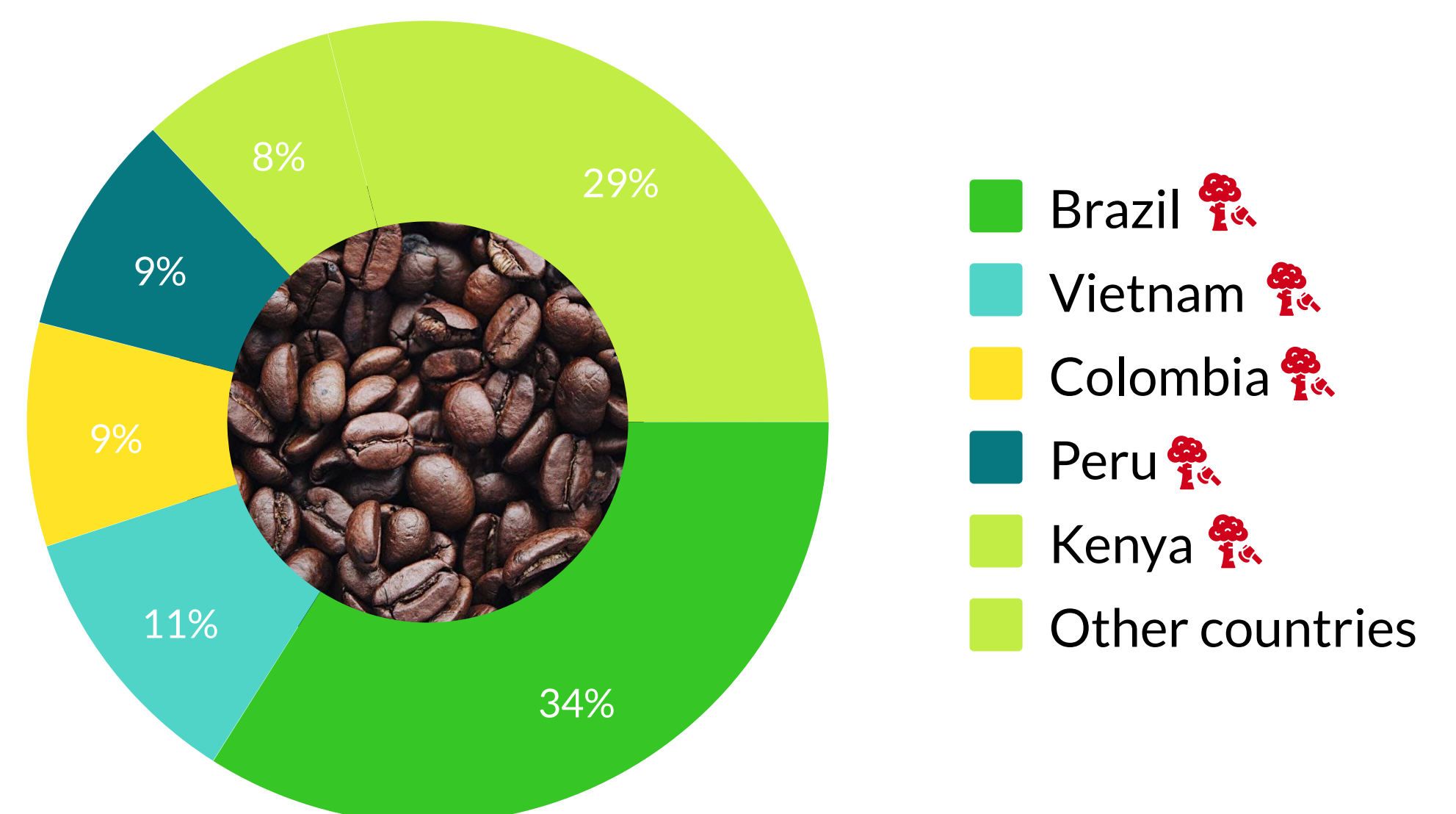
## HS 1511- Palm oil and its fractions



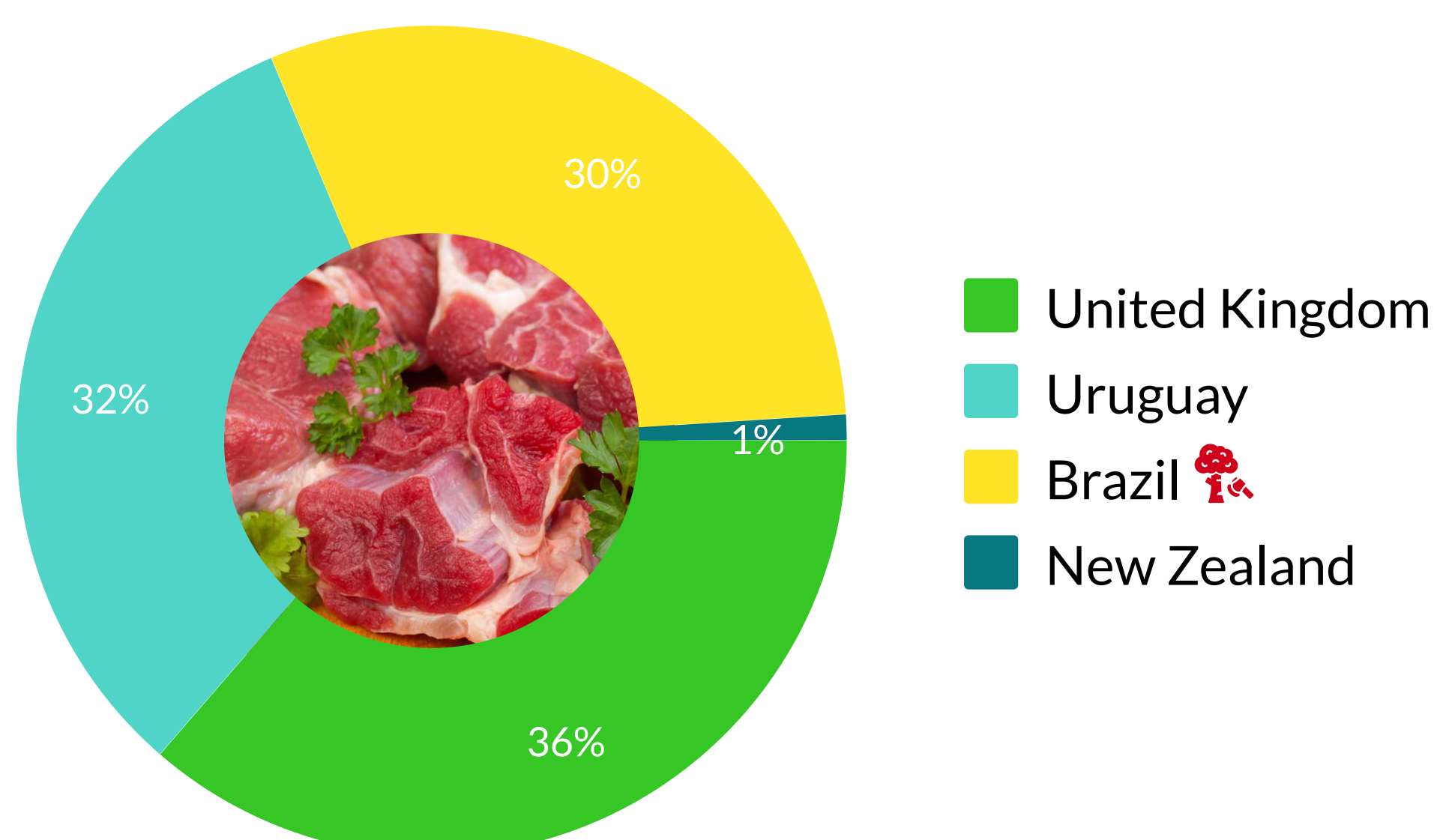
## HS 4011 - New Pneumatic tyres



## HS 0901 - Coffee, whether or not roasted or decaffeinated



## HS 0201 - Fresh Beef



## HS 1806 - Chocolate and other food preparations containing cocoa

